



# Benson C of E Primary School Strategy

*Prepared for*  
Benson C of E Primary School Teachers, Parents and Sponsors  
February 2016  
Version 1.0

*Prepared by*  
Benson Primary School Board of Governors and Senior Leadership Team





---

Table of Contents

1	Introduction .....	<b>3</b>
2	Vision & Mission .....	<b>4</b>
3	Our Strategic 'House' .....	<b>5</b>





---

# 1 Introduction

Every organisation, whether it be a large corporate business, small local charity or school, should be clear on what its aims and aspirations are and how they plan to achieve them. Developing a strategy (plan) is a means of giving coherence and direction to an organisation, its employees and stakeholders. Without clear planning individuals are not clear as to what their role and objectives are within the organisation.

The Governors and Senior Leadership Team (Mrs. Crolla and Mrs. Mottram) have therefore devised a strategy for Benson C of E Primary School to ensure all our teachers, parents, sponsors, children and community are engaged in what we are aiming to achieve.

Our pupils are our number one priority and are therefore at the heart of our strategy. We want to ensure that they receive the best education we can provide in a safe and welcoming environment in order to prepare them for their adult life.

The strategy outlines our vision for the future, our mission - what we are aiming for today and our areas of strategic focus (our pillars) of how we are going to deliver it (the plan). This document provides the top line of the strategy. Underneath each of the strategic pillars we have devised a detailed plan that clearly shows what our objectives, deliverables and targets are for each of the areas. These detailed plans are the implementation plans for the Senior Leadership Team and Teachers.

As with any strategy, it is imperative that all parties understand it, accept it and are engaged in it. The Governors, Senior Leadership Team and Teachers are committed to deliver against this plan and encourage you, the parents, to be part of this plan too. If we all work together in one direction for our shared common goal we will achieve it.

If you have any questions on the strategy, please email Jo Chapman, Parent Governor on [jochapman@live.co.uk](mailto:jochapman@live.co.uk)





---

## 2 Vision & Mission

### VISION:

**What is a vision statement?** A Vision Statement is a precise definition of what an organisation does and what it wants to accomplish in the future. Often it describes not just the future of the organisation but the future of the industry or society in which the organisation hopes to effect change. Vision statements should be clear and precise and be only one or two sentences long.

The School Vision is:

**"Making a difference to our pupils and community by providing exemplary learning and instilling values that prepares children for their adult life"**

### MISSION:

**What is a mission statement?** A Mission Statement concentrates on the present; it is a formal summary of the aims and values of an organisation. It should guide the actions of the organisation, spell out its overall goal, provide a path and guide decision-making by defining the target audience(s), approach and the desired level of performance.

The School Mission Statement is:

**"Working together we will provide a rich, stimulating and enjoyable environment, where children can begin their learning journey and prepare for their adult life. Our Christian values will help us celebrate diversity and are fundamental to the development of our pupils; we believe that if they act with honesty and determination, co-operate, respect and trust one another, they will grow to their full potential."**





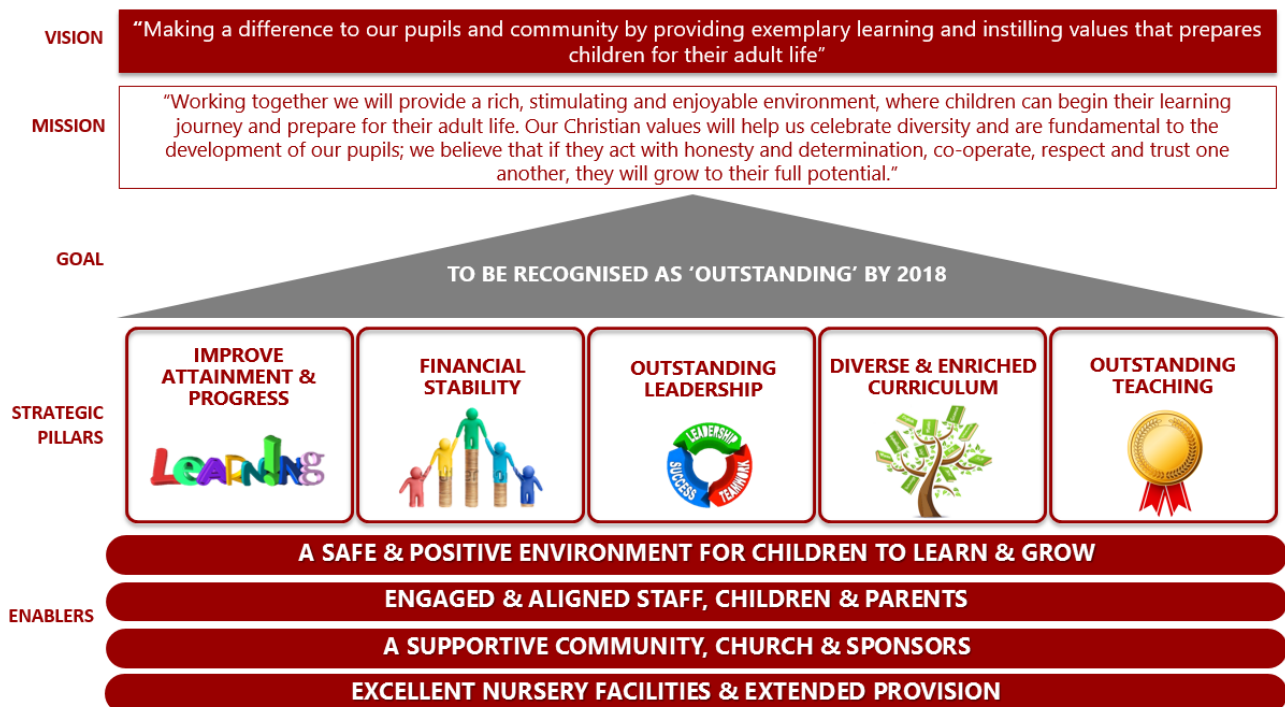
### 3 Our Strategic 'House'

Once a vision and mission has been set, an under-pinning strategy is then developed. The strategy defines the framework of how the vision and mission is to be achieved.

For our school strategy, we have used a 'House' model to develop our strategic plan; not only is it a good framework within which to work, but it also fits well with our overall ethos and is therefore easy to relate to.

Below in Graphic 1 is the overall Strategic House, followed by a breakdown of each of the sections explaining how they correlate together.

Graphic 1: Benson C of E Primary School Strategic House



#### GOAL:

What is a Goal? A goal is an aim that the organisation is wanting to achieve. This should link to the overall mission and vision

Graphic 2: Benson C of E Primary School Goal





## STRATEGIC PILLARS:

What is are Strategic Pillars? Pillars provide strength and support for something. In the case of strategy formulation, strategic pillars hold up the overall vision. Remove a pillar, and the vision is in risk of collapse. The pillars are the key areas of focus in order to achieve the overall goal, mission and vision.

Graphic 3: Benson C of E Primary School Strategic Pillars



## ENABLERS:

What is are Enablers? Enablers are the 'foundations' of the pillars. They are the key policies, people or processes that enable an organisation to deliver against the strategic pillars, goal, mission and vision.

Graphic 4: Benson C of E Primary School Enablers





Graphic 5: Benson C of E Primary School Strategic House

